

Biodiversity Assessment

Surveys - Impact Assessment - Management Plans - Monitoring



EARTH SYSTEMS
Environment | Water | Sustainability

Earth Systems offers integrated solutions to strategically assess, manage and monitor biodiversity values to achieve the best possible outcome for both your company and the environment.

We have the capability to assist companies in demonstrating best practice in biodiversity management. Effective biodiversity management can help companies to:

- Obtain permits rapidly and operate cost effectively
- Maintain a competitive advantage as preferred partners with governments and other stakeholders
- Increase investor confidence and loyalty
- Develop more cost-effective means of complying with environmental regulations

MAKE YOUR COMPANY A WORLD LEADER IN BIODIVERSITY MANAGEMENT!

WE CAN PROVIDE:

- Biodiversity impact assessments
- Management plans (project specific, species specific) or
- Terrestrial flora and fauna surveys
- Biodiversity offset assessment and implementation
- Weed assessment and control
- Aquatic fauna surveys
- Ecosystem services and resource use assessment
- On-site monitoring
- Revegetation and rehabilitation services
- Economic forestry assessment

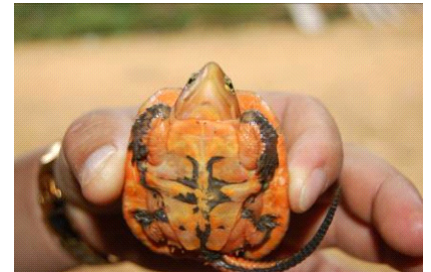


BIODIVERSITY IMPACT ASSESSMENT

We ensure that biodiversity issues adequately assessed, and appropriate measures are recommended to minimize or offset any potential impacts.

MANAGEMENT PLANS

The input of environmental expertise to create a strategic and adaptive management plan will allow biodiversity to be effectively integrated into project operations.



FAUNA AND FLORA SURVEYS

Expert targeted surveys to ensure that key biodiversity values are identified in the most cost-effective manner.

OFFSETS

When avoidance is not possible, we help to identify, implement and manage best practice biodiversity offsets which comply with relevant legislation.



BIODIVERSITY MONITORING

Effective and strategic monitoring is key to demonstrating that biodiversity related commitments are met.

REVEGETATION

The final stage in the process that creates a lasting impression of your company's impact upon the environment.



*For further information contact:
Dr Daniel Banfai or Mr Nigel Murphy*